



Exploring the Roman Forum

nearpod  VR
 Field Trips

ESSENTIAL QUESTION

What would it be like to experience a famous landmark up close?





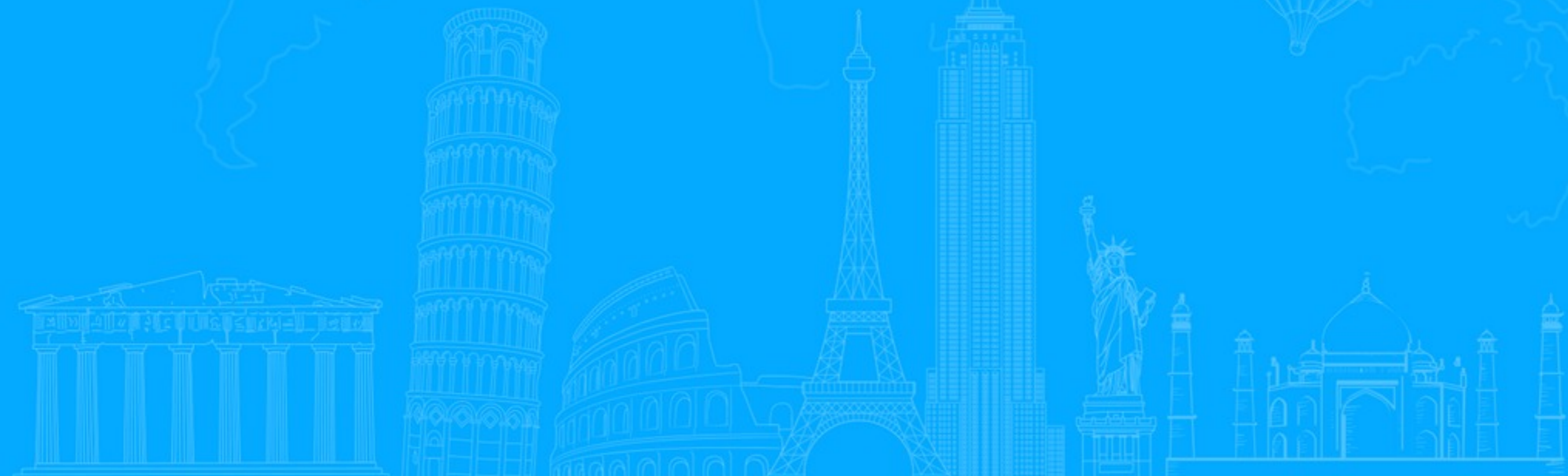
Let's get started!

Draw It

What do you already know about the Roman Forum? Why do you think the landmark is famous? Represent your answer in words, sentences, pictures, and/or symbols.



Let's explore!





VIRTUAL FIELD TRIP

Let's visit the Roman Forum. As you explore, think about what you notice and what questions come to mind. After your field trip, you will record your thoughts in the chart provided.



https://www.360cities.net/embed_iframe/2011-05-17-1525-rome-forum-spherical-panorama?r=nearpod&fullscreen=true





https://www.360cities.net/embed_iframe/gazebo-bow-bridge-central-park-new-york-city?r=nearpod&fullscreen=true



Draw It

Fill in the chart with your observations and questions from the virtual field trip. Share your chart with a partner.

OBSERVATIONS	QUESTIONS



INFORMATIONAL VIDEO

On the next slide, you will watch a short informational video about the Roman Forum. Take notes as you watch to help you with the summary assignment at the end of the lesson.



<https://www.youtube.com/embed/fOGyRSwpC8M>

Open Ended Question

What new information did you learn about the Roman Forum?

Poll

Did you learn something new about the Roman Forum?

- ☐ Yes
- ☐ No
- ☐ I'm not sure

Poll

How much effort did you put into your paragraph?

- ☐ Very little - I hardly tried.
- ☐ Some - I did what was expected of me.
- ☐ A lot - I put in extra effort.

Poll

Did this lesson make you want to visit the Roman Forum?

- ☐ Yes
- ☐ No
- ☐ I'm not sure

Thank you!



nearpod  VR